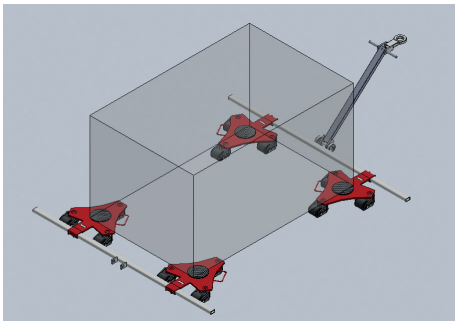
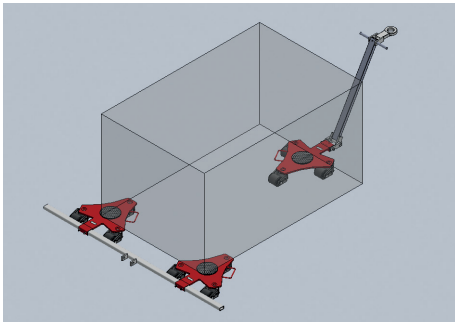
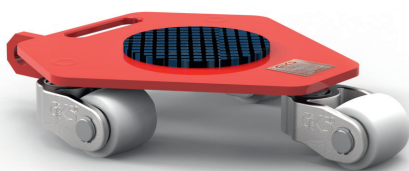




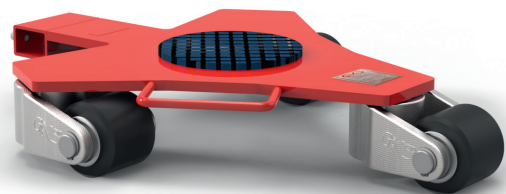
Podwozia obrotowe ► ► obciążenie 1 tona lub 2 tony



- Ú[á, [: ää ài[d, ^ÄÜŠÄ Áæ äbÁæ ^bÁ ^•[\[&ä äjæä[, & ^bÁ [* Á^ ~ ^, æ ^Ä Á^•æ äÄ[ÁHÁ àÁÄ 5:\ ä[][Áæy* [Á^•æ ~ ÁHÁ àÁÄ D
- Y ^][•æ ^} ä Á[áæä[, ^HÁ & } ä Á[ÁÄ[á, [: ä!æ Á^•: ^\Á[Áä * } ä äæ
- Ö[Áæ •][[č Á[Á[•æ: \æ@Ä Á ä•: ^bÁ á][][&ä ä: \[á: ^} äæ][á, [: äÜŠÄ [* Á^ Ä ^][•æ] ^Ä Ä[|ä | ^æ[, ^Ä[| ä
- Y Áæ ^[&ä áÄ[: { ä•: & ^} ää ä ä Äæ •][[d, æ ^* [Áæ ~ } \ { [] äÁ ^, æ Á5 } ^ &@Ä [á | ä!æ ÁbÁæ ^bÁ ^•[\[&ä äjæä[, & ^b



RL1



RL2

dane techniczne

	RL1	RL2
~ { ^Ä ^! [ä	11456	10238
ä! Áä ä\ Á[\	3 à 75 x 66 mm	3 à 85 x 85 mm
, ^•[\[Áæjæä[, & æ	100 mm	110 mm
!^ä) äæ ~ { ^Ä ç][ä *[, ^bÁ	170 mm	170 mm
, ^{ äÄ Á^, } d:} ^ÄŠÄ ÄÄ PD	376 x 379 x 100 mm	685 x 515 x 110 mm
, äæ	15 kg	30 kg
{ ää[] [10 kN (1 t)	20 kN (2 t)